

## 掘进齿 · 煤截齿



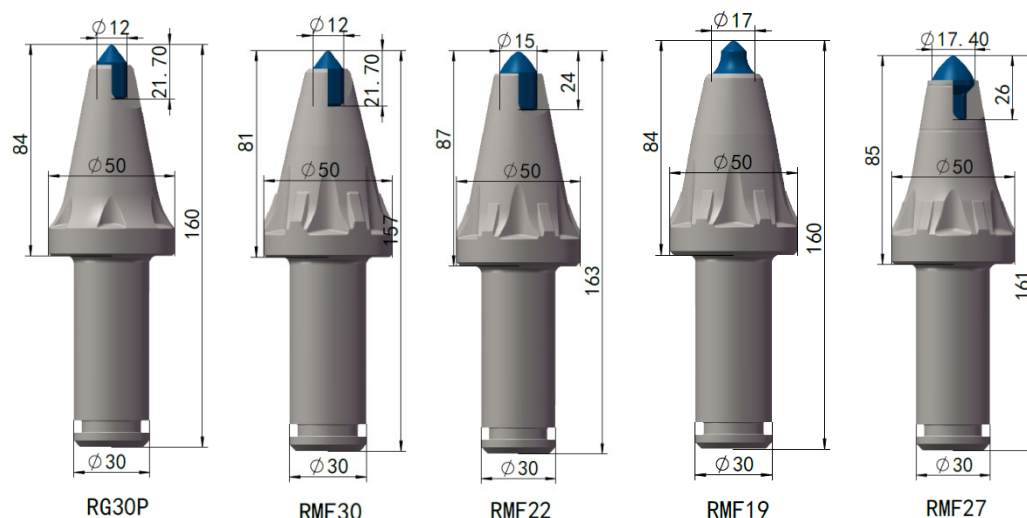
山东洛克曼钻具有限公司

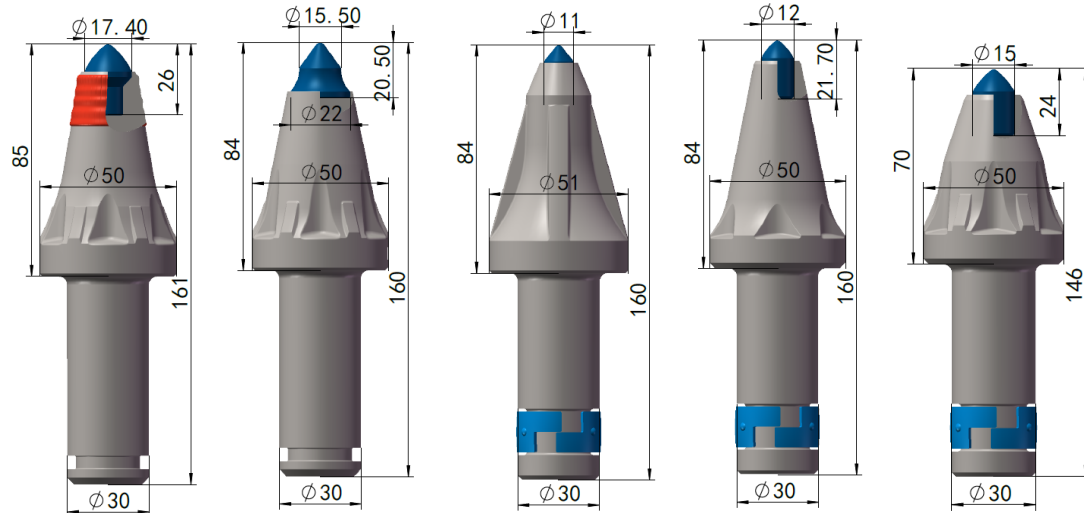
我们总结了截齿在实际使用中的设计经验，选用粗晶高钴碳化钨，采用温挤压成型的刀身，采用堆焊工艺将耐磨层涂覆在齿体上，并与母材冶金结合。因此，它具有耐磨性好，抗弯强度高，在高冲击温度下保持高硬度的优点。

## 截齿类型

- 根据合金头的类型可分为帽型和直柱型。
- 根据齿柄可分为标准齿柄和阶梯齿柄型。
- 根据截齿的固定方式，分为底端卡环、内嵌卡环和摩擦卡环。
- 为了更好地保护切削齿的主体，可以涂敷耐磨层。

柄粗  $\phi 30\text{ mm}$





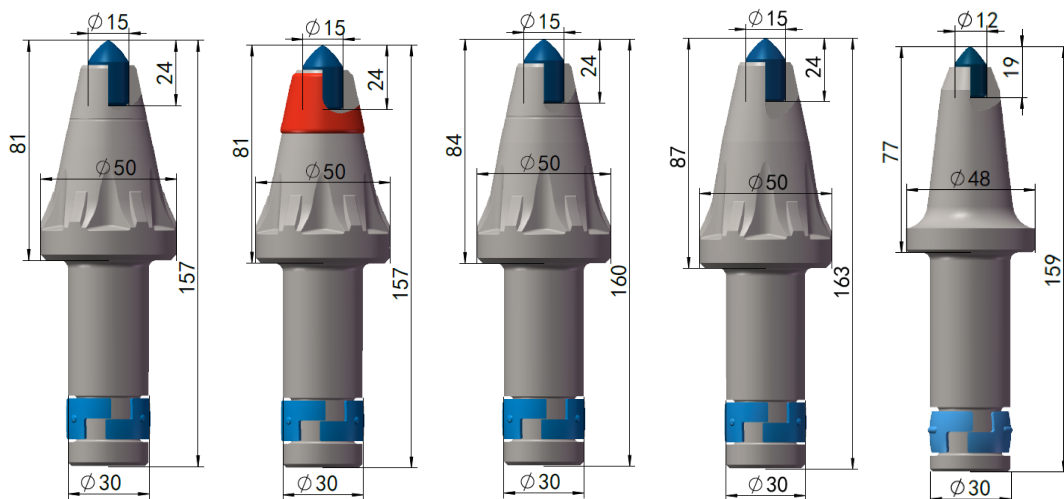
RMF23P

RMF26

RMK99

RMK101

RMK95



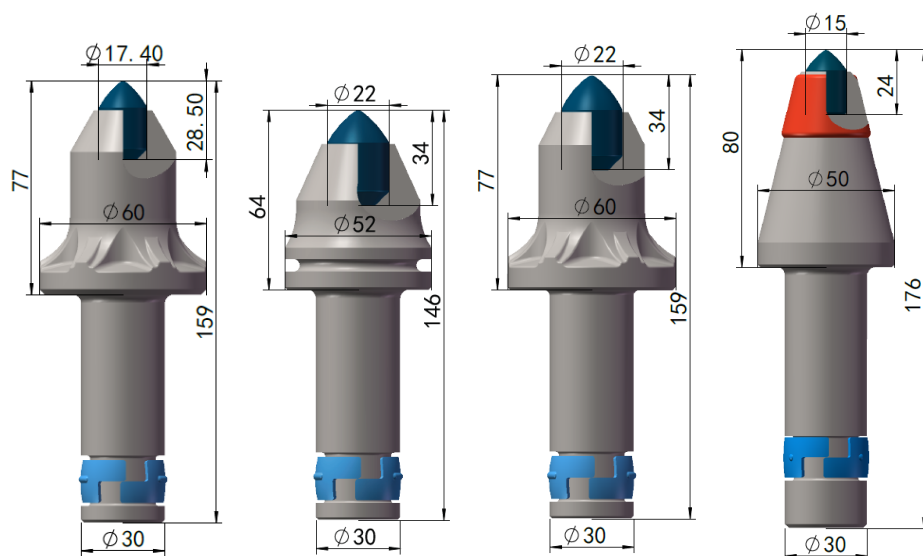
RMK84

RMK96

RMK97

RMK88

RMK06

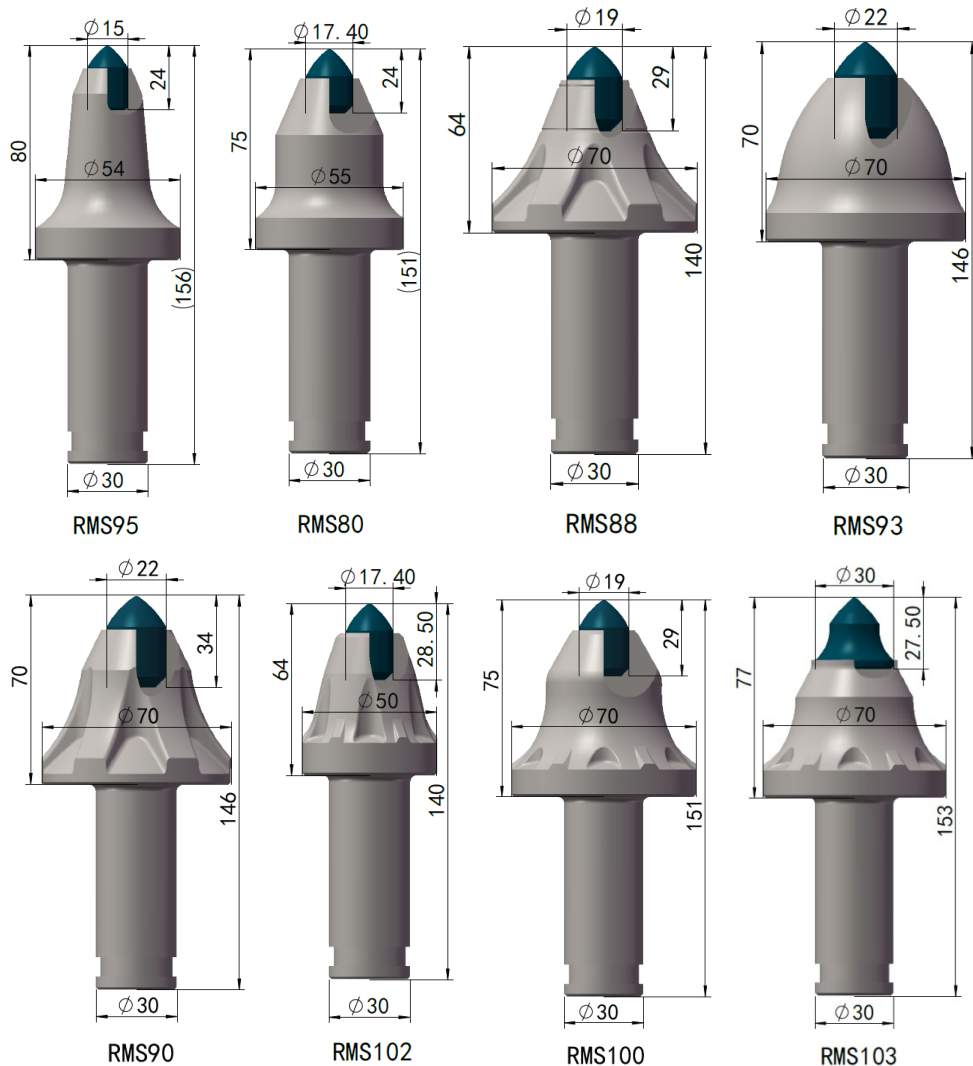


RMK86

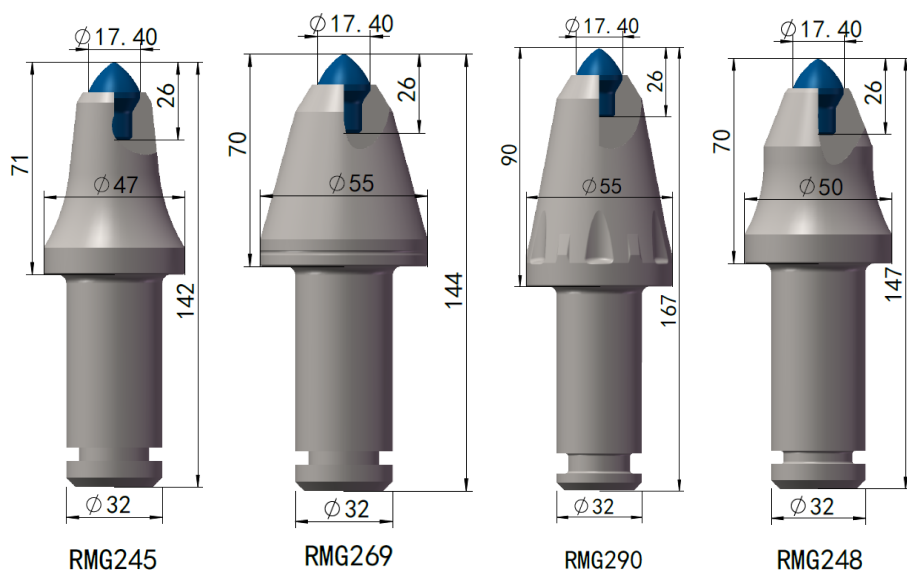
RMK38

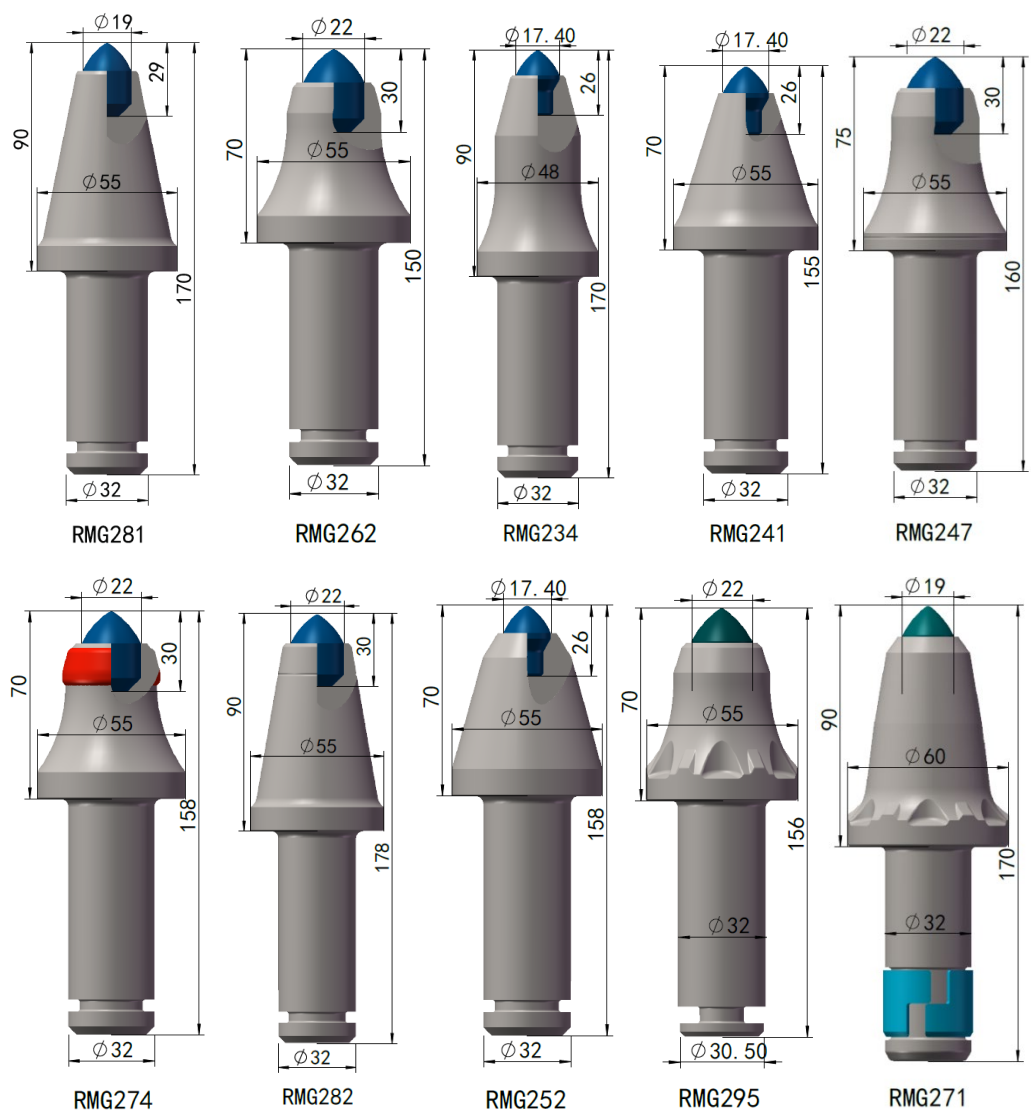
RMK90

RMK100P

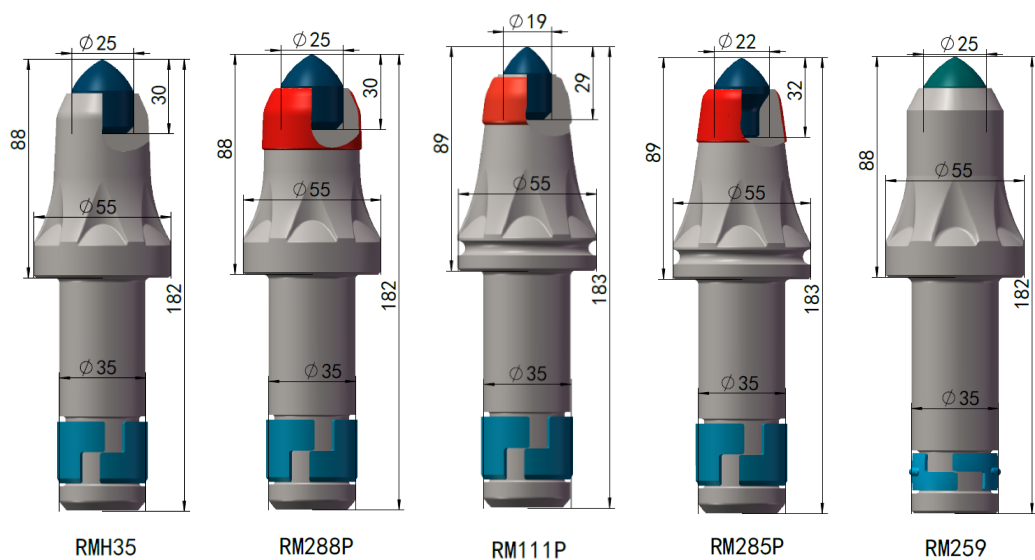


柄粗  $\phi 32 / \phi 33$  mm

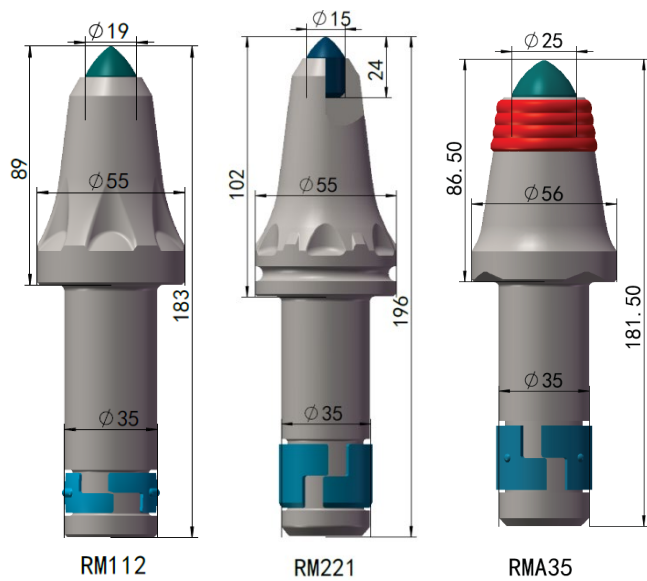




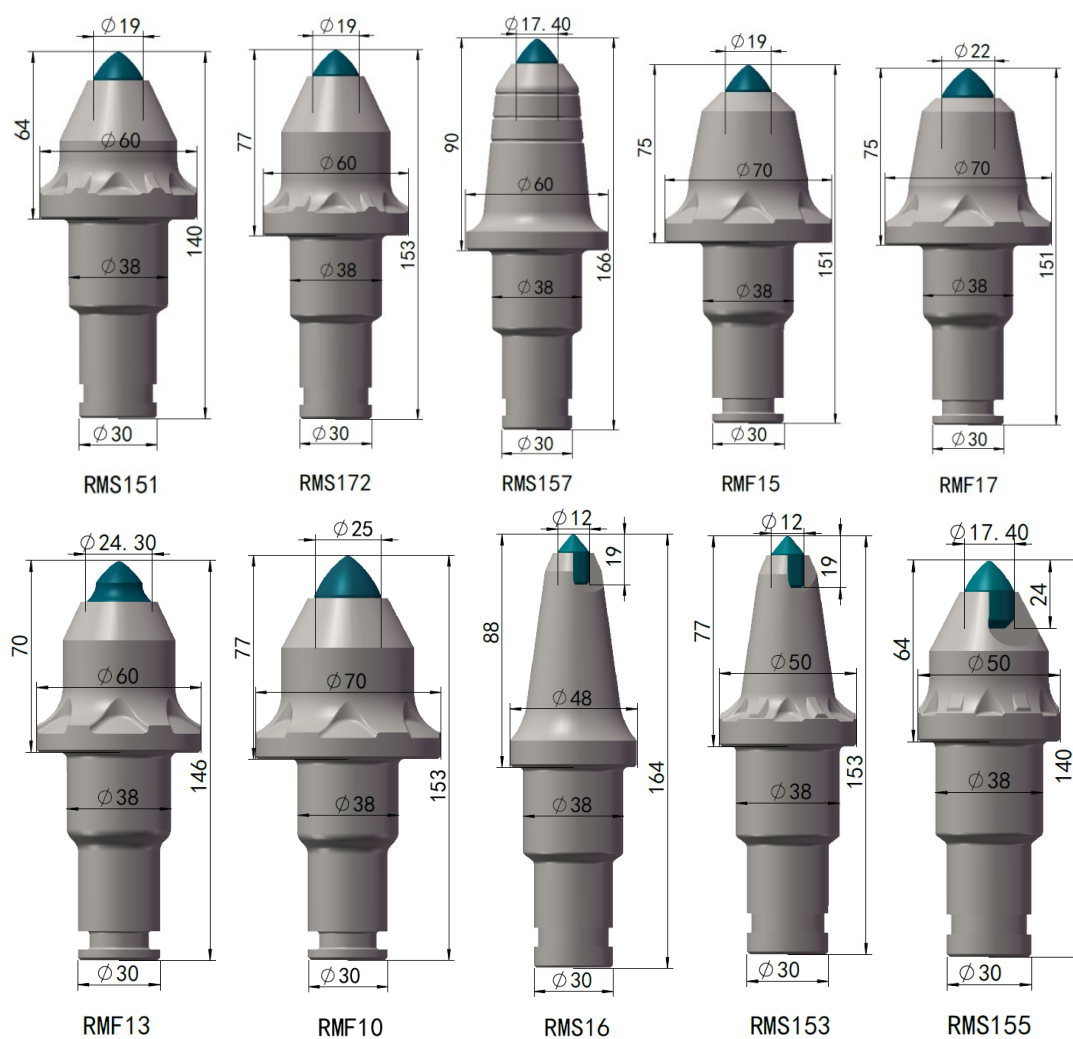
柄粗 φ 35 mm U95 U94 U92

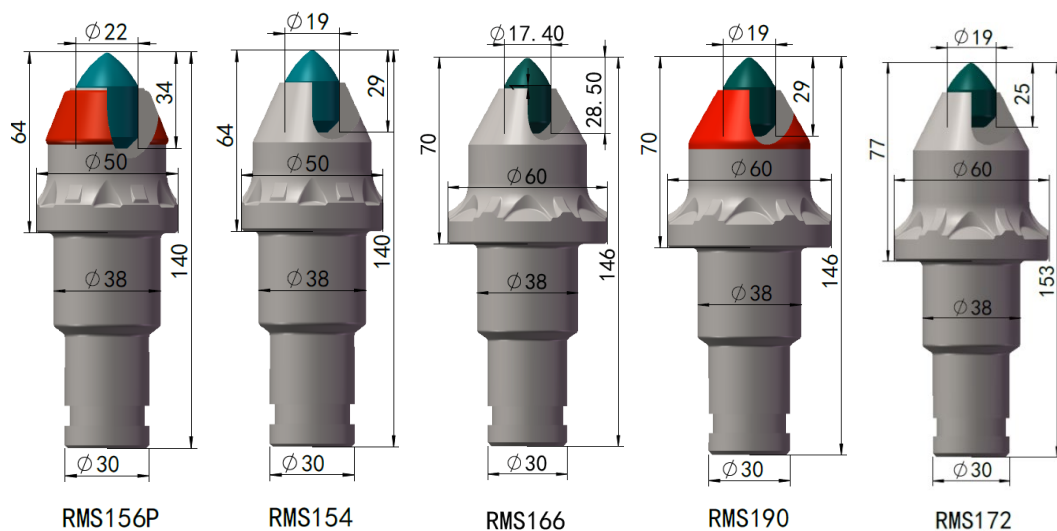




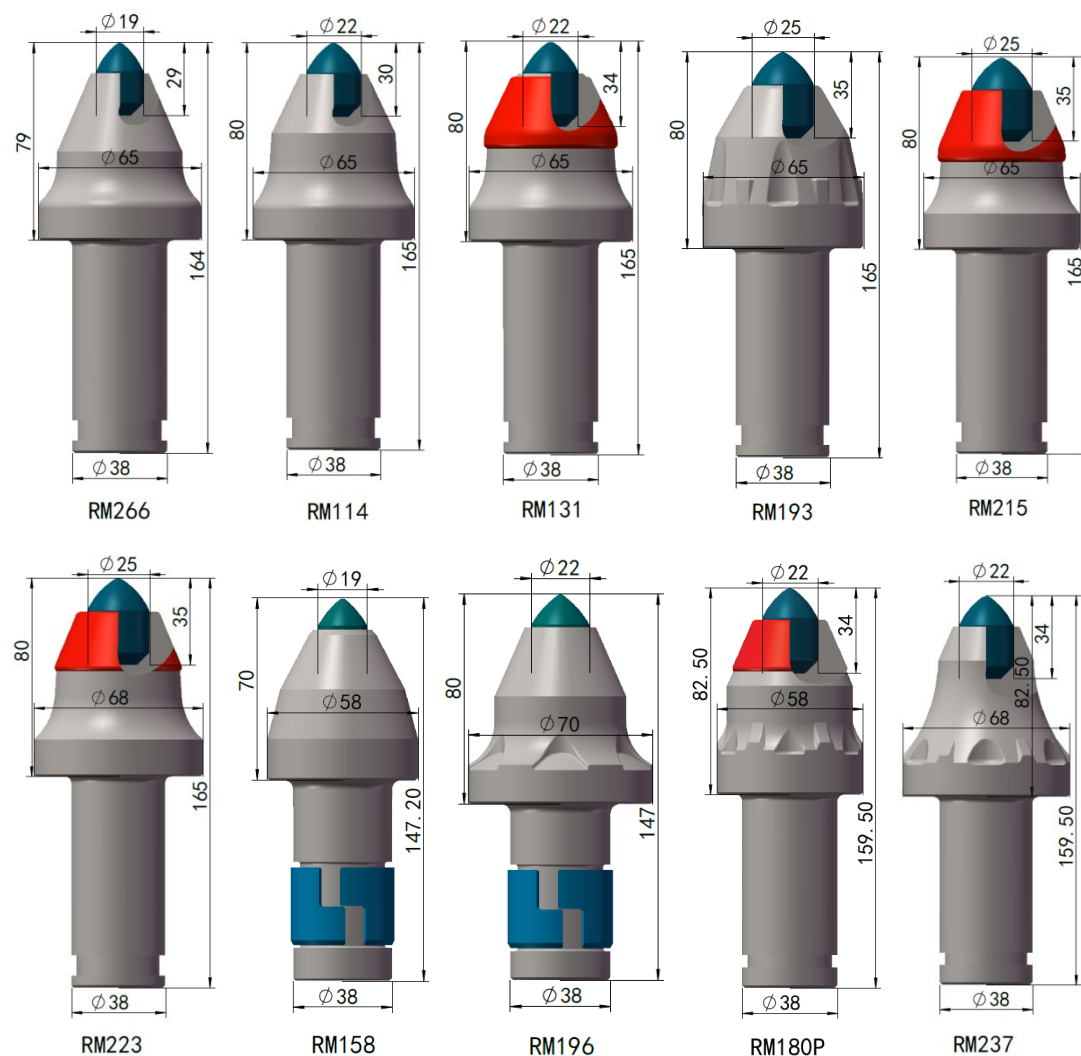


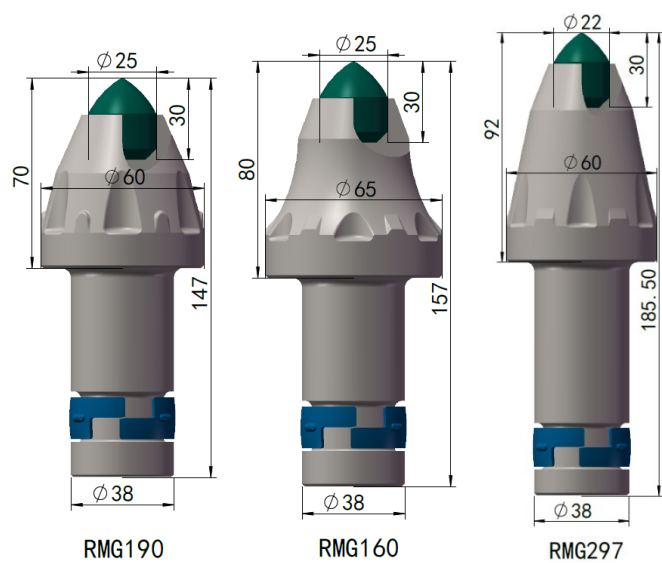
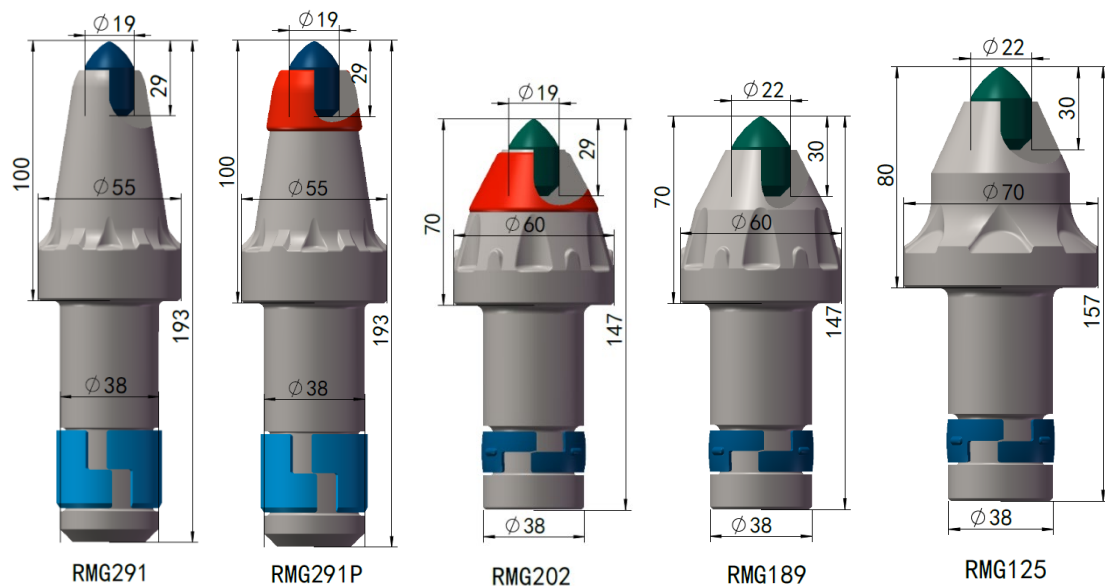
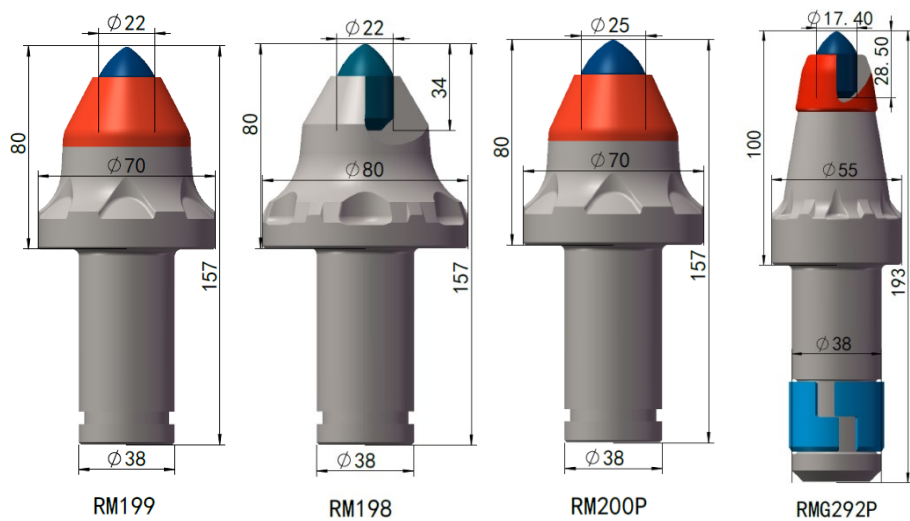
柄粗  $\phi$  38 / 30 mm





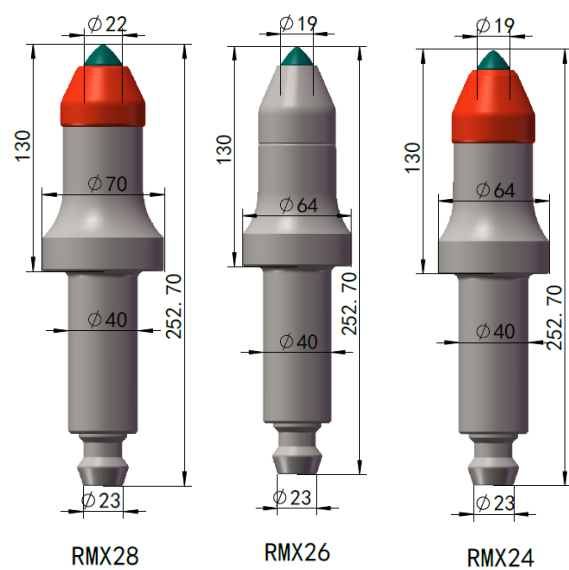
柄粗  $\phi$  38 mm



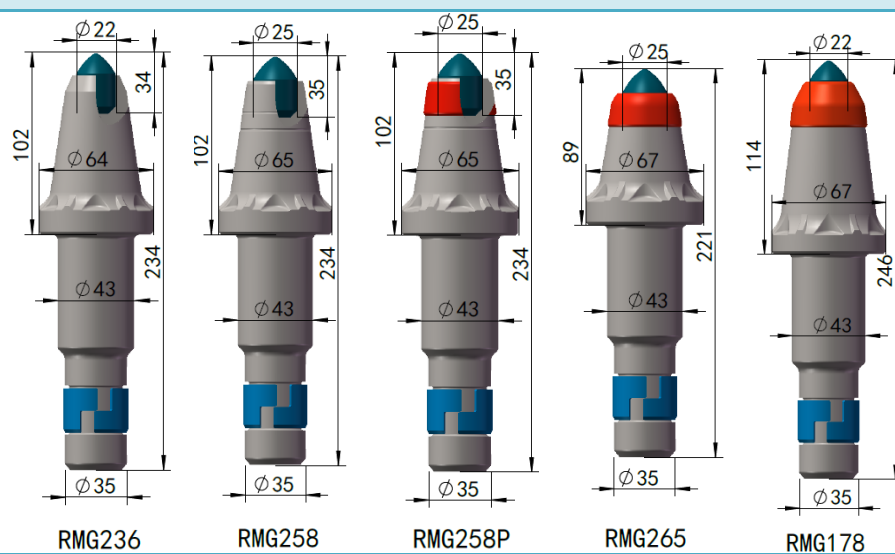




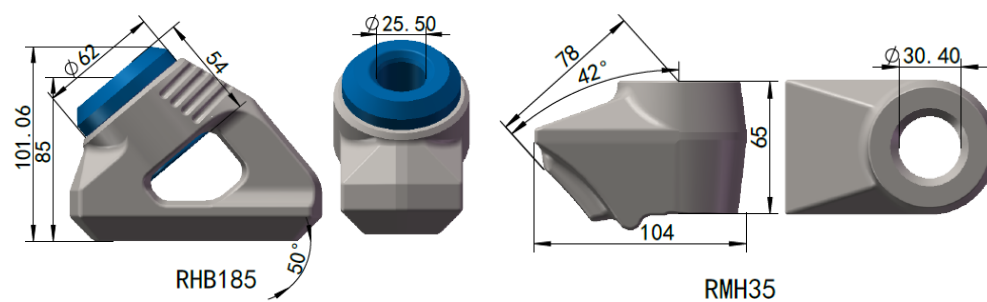
柄粗  $\phi 40$  mm

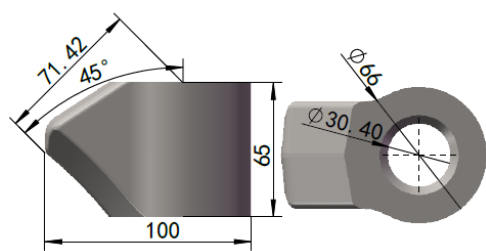


柄粗  $\phi 43 / 35$  mm

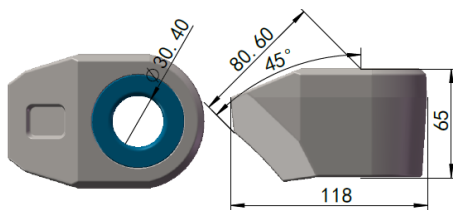


齿座

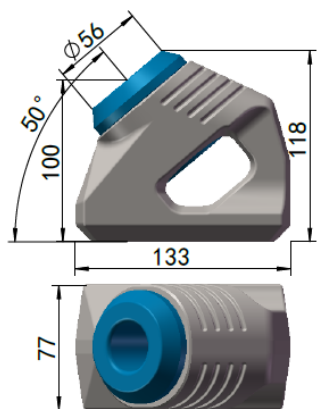




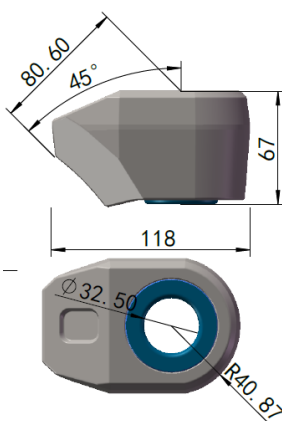
RMH43G



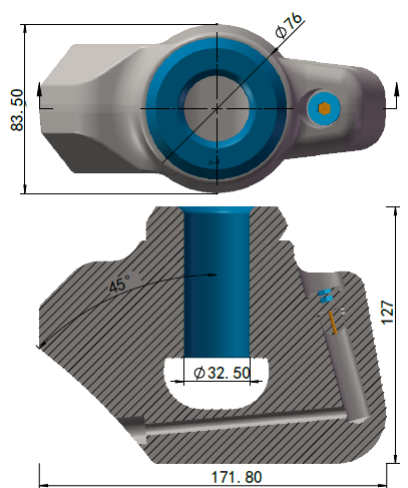
RMH75



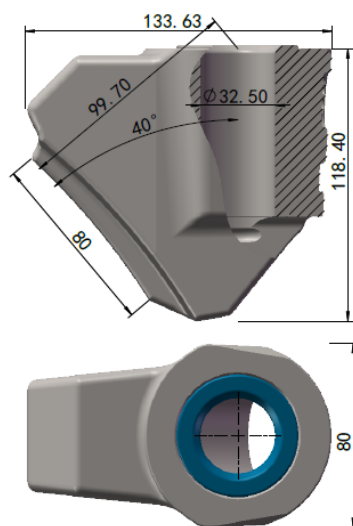
RMH183



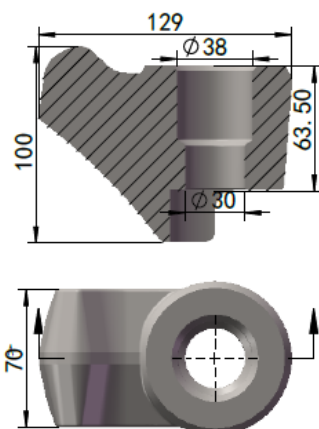
RMH205



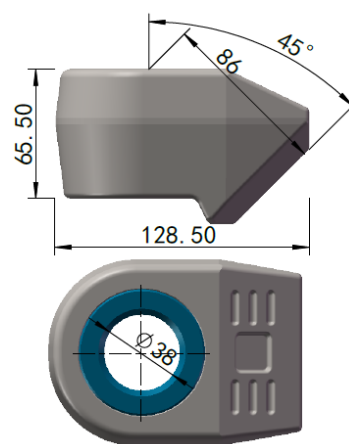
RMH213



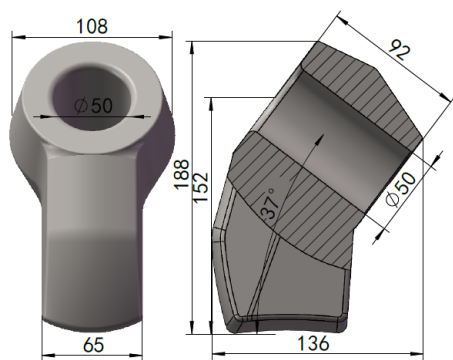
RMH242



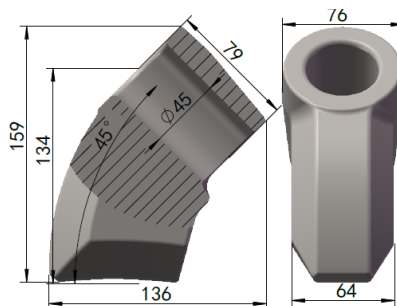
RMH204



RMH38



RMU94

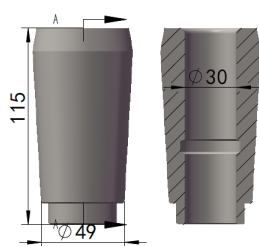


RMU82

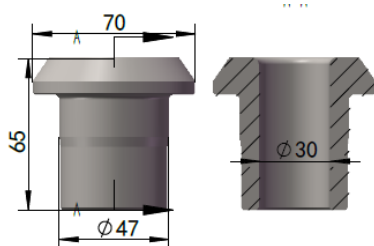


RMU95

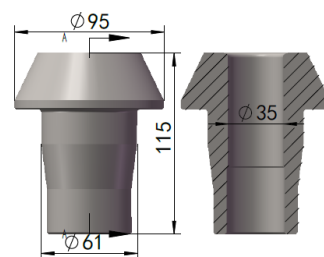
## 齿套.齿靴



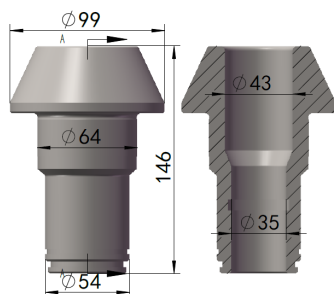
RMG30K



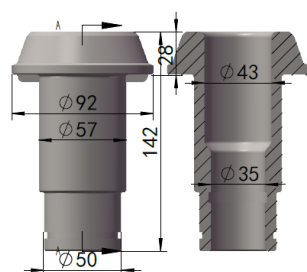
RMG30B



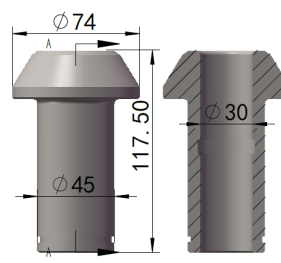
RMG35C



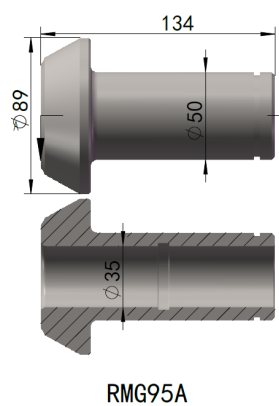
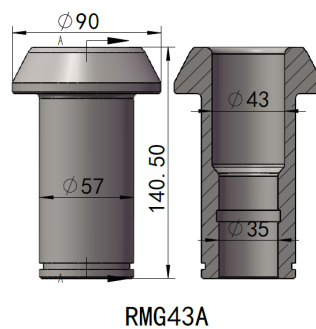
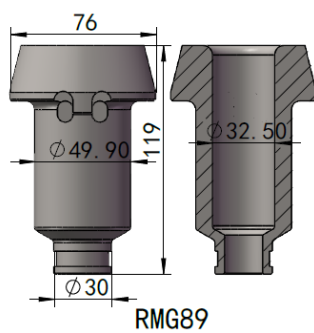
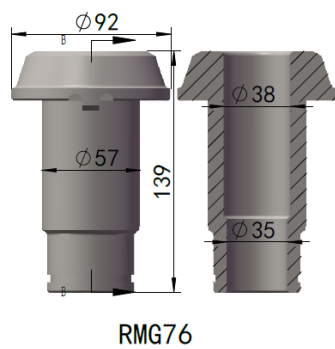
RMG43E



RMG43B



RMU82L



TM

